



PATHWAYS TO PARTNERING WITH YOUTH-LED GROUPS AND ORGANISATIONS

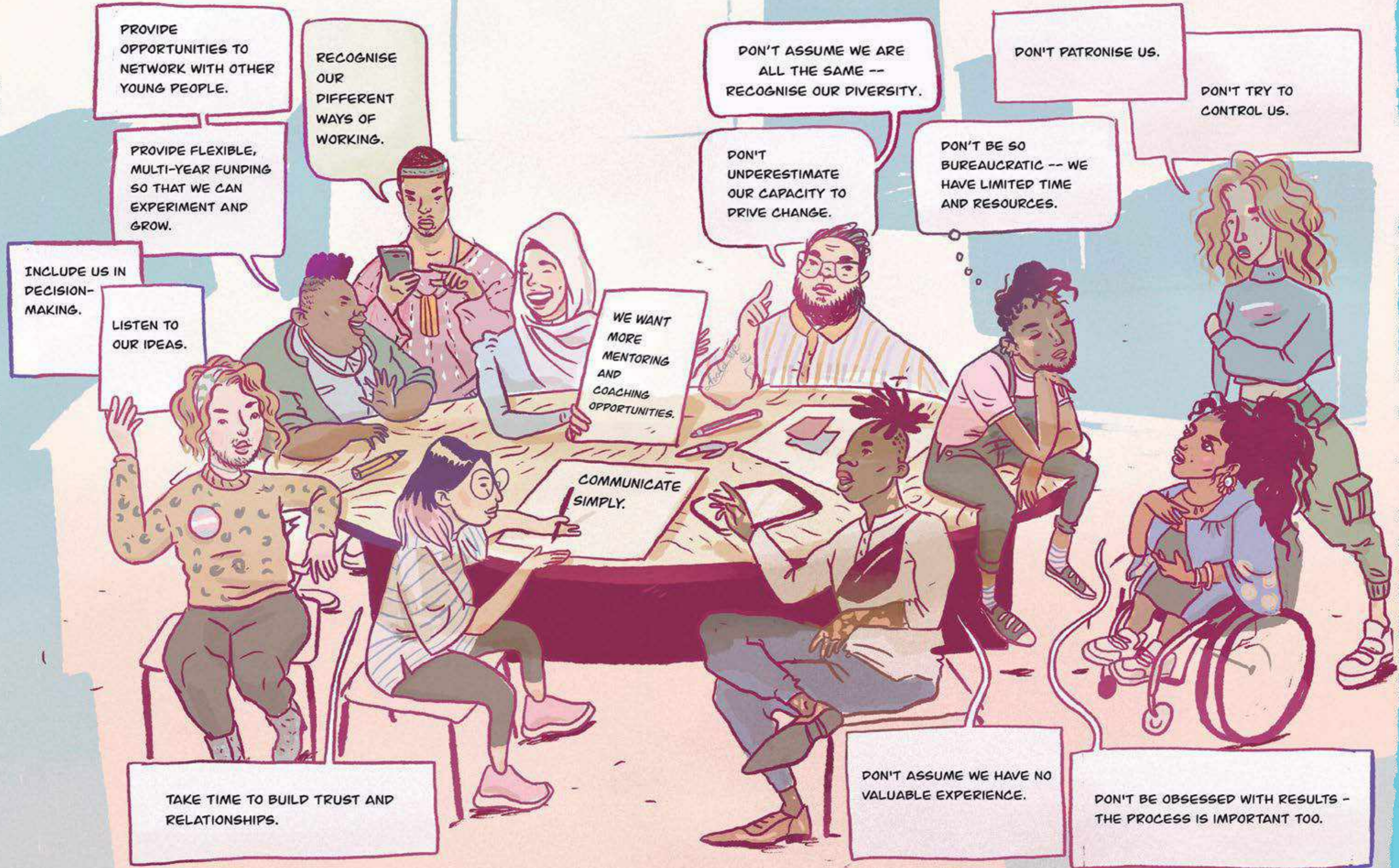


CONTENTS

How to partner with youth led organisations	4
Introduction	6
Key Step 1: Identifying partners and developing partnerships	7
1.1 Partner mapping	7
1.2 Finding out more	8
Key Step 2: mutual appraisals	9
2.1 Mutual organisational assessment	9
2.2 Capacity assessment	10
2.3 Partners Strengthening / Capability reports and plans	11
Key Step 3: Assessing risks	12
3.1 Risk assessment & mitigation strategy	12
3.2 Safeguarding	13
Key Step 4: Signing agreements	14
Partnership Agreement / MoU development	14
Key Step 5: Mutual oversight	15
5.1 Communication Protocols	15
5.2 Reporting	16
Key Step 6: Regular feedback & annual reviews	17
6.1 Feedback	17
6.2 Reviews	17
Key Step 7: Exit & sustainability	18
7.1 Sustainability planning	18
7.2 Closure/Exit	18

HOW TO PARTNER WITH YOUTH-LED ORGANISATIONS

WHAT YOUNG PEOPLE SAY



PROVIDE OPPORTUNITIES TO NETWORK WITH OTHER YOUNG PEOPLE.

RECOGNISE OUR DIFFERENT WAYS OF WORKING.

PROVIDE FLEXIBLE, MULTI-YEAR FUNDING SO THAT WE CAN EXPERIMENT AND GROW.

DON'T ASSUME WE ARE ALL THE SAME -- RECOGNISE OUR DIVERSITY.

DON'T PATRONISE US.

DON'T TRY TO CONTROL US.

INCLUDE US IN DECISION-MAKING.

LISTEN TO OUR IDEAS.

DON'T UNDERESTIMATE OUR CAPACITY TO DRIVE CHANGE.

DON'T BE SO BUREAUCRATIC -- WE HAVE LIMITED TIME AND RESOURCES.

WE WANT MORE MENTORING AND COACHING OPPORTUNITIES.

COMMUNICATE SIMPLY.

TAKE TIME TO BUILD TRUST AND RELATIONSHIPS.

DON'T ASSUME WE HAVE NO VALUABLE EXPERIENCE.

DON'T BE OBSESSED WITH RESULTS - THE PROCESS IS IMPORTANT TOO.